

## Application guide

# Mepilex<sup>®</sup> Up

### Designed to minimize the risk of leakage

- Unique capability to spread fluids in all directions even against gravity<sup>1</sup>
- Supporting a higher fluid handling capacity than other foam dressings<sup>\*1</sup>
- Effectively manage high volumes of fluid for a long period of time<sup>1</sup>
- Ability to handle viscous fluids<sup>1</sup>
- Can be used in a wide range of exuding wounds and locations<sup>1</sup>

\*When comparing lab test result for Smith & Nephew Allevyn Gentle, Coloplast Biatain<sup>®</sup> Silicone NB, Convatec Aquacel<sup>®</sup> Foam, Essity Cutimed<sup>®</sup> Siltec<sup>®</sup>, according to EN13726:2023 Annex E



### Application on leg



### Application on foot



### Application on heel



### Application on toe



## Application on toe – cross



## Application on elbow



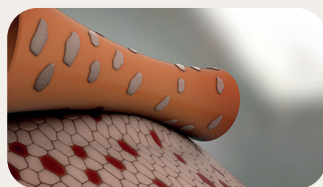
## Application on finger



Secure Mepilex® Up with a secondary bandage or other fixation device.

### Safetac® technology. Less damage. Less pain.

In numerous randomized trials, dressings with Safetac® are clinically demonstrated to minimize damage to the wound and skin at removal<sup>2-9</sup>. By sealing the wound margins, they help prevent maceration. With less damage to the wound and skin, pain at dressing change is minimized<sup>2,7,10</sup>. Therefore, several randomized trials associate dressings with Safetac with faster healing and lower total treatment cost<sup>3,7,10</sup>.



Without Safetac



With Safetac

Scan the QR to access My Mölnlycke support platform. Get direct user information such as product details, dressing instructions and application guides.



Mölnlycke.ca

**References:** 1. Mölnlycke Health Care. Data on File, 2024. 2. Van Overschelde, P. et al. A randomised controlled trial comparing two wound dressings used after elective hip and knee arthroplasty. Poster presentation at 5th Congress of the WUWHS, Florence, Italy, 2016. 3. Silverstein P. et al. An open, parallel, randomized, comparative, multicenter study to evaluate the cost-effectiveness, performance, tolerance, and safety of a silver-containing soft silicone foam. *Journal of Burn Care and Research*, 2011. 4. Gee Kee E.L. et al. Randomized controlled trial of three burns dressings for partial thickness burns in children. *Burns*, 2014. 5. David F. et al. A randomised, controlled, non-inferiority trial comparing the performance of a soft silicone-coated wound contact layer (Mepitel One) with a lipidocolloid wound contact layer (UrgoTul) in the treatment of acute wounds. *International Wound Journal*, 2017. 6. Patton M.L. et al. An open, prospective, randomized pilot investigation evaluating pain with the use of a soft silicone wound contact layer vs. a lipidocolloid wound contact layer on split thickness skin grafts as a primary dressing. *Journal of burn care & research*, 2013. 7. Bredow J. et al. Evaluation of Absorbent Versus Conventional Wound Dressing. A Randomized Controlled Study in Orthopedic Surgery. *Deutsche Arzteblatt International*, 2018. 8. Meaume S. et al. A study to compare a new self-adherent soft silicone dressing with a self-adherent polymer dressing in stage II pressure ulcers. *Ostomy Wound Management*, 2003. 9. Herbst P. et al. Prophylactic use of Mepitel Film prevents radiation-induced moist desquamation in an intra-patient randomised controlled clinical trial of 78 breast cancer patients. *Radiotherapy and Oncology*, 2014. 10. Gotschall C.S. et al. Prospective, randomized study of the efficacy of Mepitel on children with partial-thickness scalds. *Journal of Burn Care & Rehabilitation*, 1998.

## Find out more at Mölnlycke.ca

Clinicians should ensure that the product is used in accordance with the manufacturer's instructions for use and their own clinical judgement. Report complaints to Mölnlycke Health Care.

Mölnlycke Health Care Canada, 2010 Winston Park Drive, Suite 100 Oakville, ON L6H 5R7. Phone: 905-829-1502. The Mölnlycke Health Care names and respective logos are registered globally to one or more of the Mölnlycke Health Care Group of Companies. © 2025 Mölnlycke Health Care AB. All rights reserved. Allevyn and Allevyn Life are registered trademarks of Smith & Nephew, Inc. Coloplast is a registered trademark of the Coloplast Group. Convatec is a registered trademark of Convatec Inc. Essity is a registered trademark of Essity.

CEWC052502-1

