

# Mepilex<sup>®</sup> Border Ag

Antimicrobial, absorbent all-in-one foam dressing with Safetac<sup>®</sup> technology

## Backing film with dynamic permeability

- Advanced fluid handling
- Shower proof, bacterial and viral barrier\*
- Thin and conformable

## Multi-layered "moisture control" foam pad

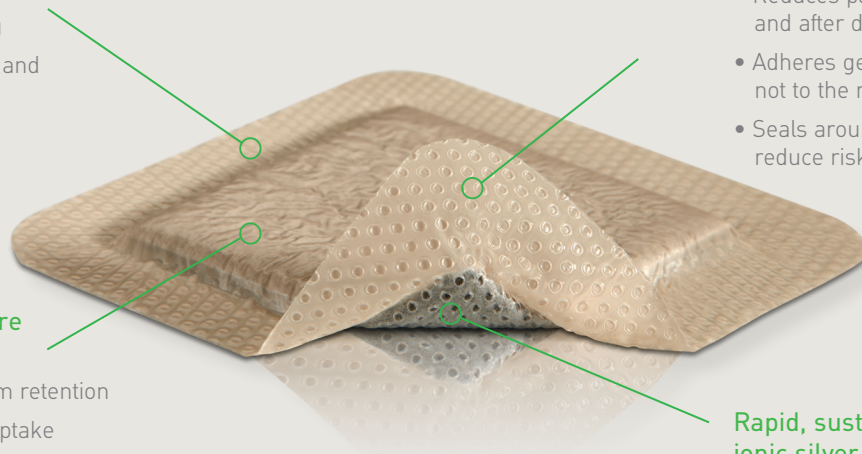
- Fibre layer for maximum retention
- Provides optimal fluid uptake
- Maintains integrity
- Conforms to body contours

## Safetac<sup>®</sup> layer

- Reduces pain and trauma before, at and after dressing change<sup>1</sup>
- Adheres gently to dry, intact skin but not to the moist wound bed<sup>3</sup>
- Seals around the wound margins to reduce risk of maceration<sup>5</sup>

## Rapid, sustained release of ionic silver

- Inactivates wound related pathogens within 30 minutes<sup>4</sup>
- Sustained silver release up to 7 days<sup>4</sup>



**Safetac<sup>®</sup>**  
TECHNOLOGY

\* microbes larger than 25 nm

- Minimizes pain and trauma associated with dressing change<sup>1,2,3</sup>
- Provides rapid, broad spectrum antimicrobial efficacy and sustained silver activity<sup>5</sup>
- Advanced fluid handling for optimal exudate management

## Proven choice for a better outcome

Safetac\*, pioneered by Mölnlycke, delivers above and beyond the ordinary. Proven to help optimize the wound healing journey and even prevent wounds, dressings with Safetac are the safe choice for patients and a champion for higher standards in wound care.

In fact, we have a wealth of evidence that supports the clinical and economic benefits of dressings with Safetac, including Mepilex<sup>®</sup>, Mepitel<sup>®</sup>, Mepiform<sup>®</sup> and Mepitac<sup>®</sup>. To date, these dressings have helped millions of patients worldwide<sup>7-9</sup>.

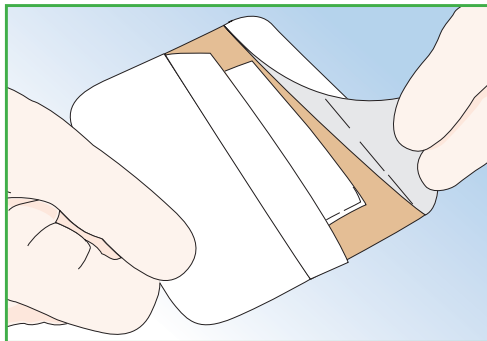
\* A unique proprietary technology exclusive to Mölnlycke Health Care

**Safetac<sup>®</sup>**  
TECHNOLOGY

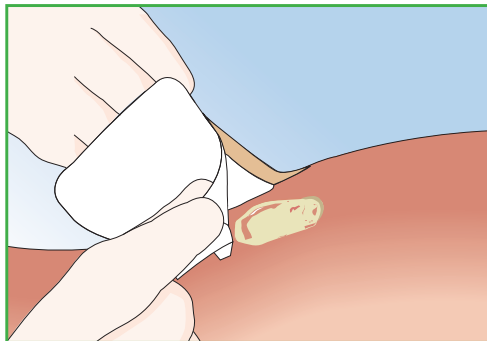
Mepilex<sup>®</sup> Border Ag

  
**Mölnlycke<sup>®</sup>**

## Directions for use



**1.** Gently cleanse the wound; dry surrounding skin. Choose a dressing size that will allow the adherent border to overlap the wound area by at least 2cm. Remove the release film.



**2.** Lay absorbent foam pad over wound area. Gently smooth adherent border in place. Do not stretch. Mepilex® Border Ag can remain in place for up to 7 days depending on drainage and wound condition.

### References:

- White R., A Multinational survey of the assessment of pain when removing dressings. Wounds UK 2008; Vol 4, No 1.
- Dykes PJ et al. Effects of adhesive dressings on the stratum corneum of the skin. J Wound Care 2001; 10(2):7-10.
- Dykes PJ. The effect of adhesive dressing edges on cutaneous irritancy and skin barrier function. J Wound Care 2007; 16(3):97-100.
- External lab report: NAMSA 09C 29253 01/09C 29253 02.
- Meaume S et al. A study to compare a new self adherent soft silicone dressing with a self adherent polymer Management, 2003.

## How Mepilex® Border Ag works

Mepilex® Border Ag is an antimicrobial all-in-one foam dressing that effectively absorbs and retains exudate and maintains a moist wound environment. The Safetac® layer seals the wound edges, preventing leakage of exudate onto the surrounding skin, thus minimizing the risk for maceration. Safetac® technology also minimizes trauma to the wound and pain to the patient. Mepilex® Border Ag offers all the advantages of Mepilex® Border in conjunction with optimal antimicrobial efficacy and odour control.

Mepilex® Border Ag inactivates wound related pathogens within 30 minutes of application and maintains release action for up to 7 days. Its antimicrobial properties are effective against a wide range of organisms including MRSA, VRE, and Pseudomonas.

## Benefits of Mepilex® Border Ag

Mepilex® Border Ag is an antimicrobial soft silicone foam dressing that absorbs exudate and maintains a moist wound environment.

- No secondary fixation required
- Can remain in place for up to 7 days depending on wound condition and exudate level
- Maintains a moist wound environment
- Low friction coefficient for secure fixation

## Mepilex® Border Ag Assortment (Sterile packed)

Art. no	Size cm	Pcs/Box	Pcs/Case
395200	7.5 x 7.5	5	70
395300	10 x 10	5	50
395010	12.5 x 12.5	5	50
395400	15 x 15	5	50
395600	15 x 20	5	45
395800	10 x 20	5	35
395700	10 x 25	5	35
395900	10 x 30	5	25

## Mepilex® Border Sacrum Ag

382000	18 x 18	5	40
382400	23 x 23	5	25

\*Notice: For Mölnlycke licensed product details including indications and precautions, please refer to [www.molnlycke.ca](http://www.molnlycke.ca)

## Indications\*

Mepilex® Border Ag is an antimicrobial soft silicone foam dressing that is designed for the management of low to moderately exuding wounds such as leg and foot ulcers, pressure ulcers and partial thickness burns.

Mepilex® Border Ag may be used on infected wounds as part of a treatment regimen under supervision of a qualified health care professional.

Mepilex® Border Ag can be used under compression.

## Precautions\*

- Mepilex® Border Ag should be used under the supervision of a qualified health care professional.
- Do not use on patients with a known sensitivity to silver.
- Clinicians/Healthcare Professionals should be aware that there are very limited data on prolonged and repeated use of silver containing dressings, particularly in children and neonates.
- Do not use Mepilex® Border Ag during radiation treatment or examinations e.g. X-ray, ultrasound, diathermy or Magnetic Resonance Imaging.
- Avoid contact with electrodes or conductive gels during electronic measurements, e.g. electrocardiograms (ECG) and electroencephalograms (EEG).
- Do not use Mepilex® Border Ag together with oxidizing agents such as hypochlorite solutions or hydrogen peroxide.
- For external use only.
- Mepilex® Border Ag may cause transient discolouration of the wound bed and surrounding skin.
- In the event of clinical infection, Mepilex® Border Ag does not replace the need for systemic therapy or other adequate infection treatment.
- The interaction of Mepilex® Border Ag with other topical treatments has not been demonstrated.
- Other than saline solution or water, the interaction of cleansing agents in combination with Mepilex® Border Ag has not been demonstrated.
- If reused, performance of product may deteriorate, cross contamination may occur.
- Sterile. Do not use if inner package is damaged or opened prior to use. Do not re-sterilize.
- If the product is used after the expiry date, product properties cannot be ensured.

