

Exufiber®

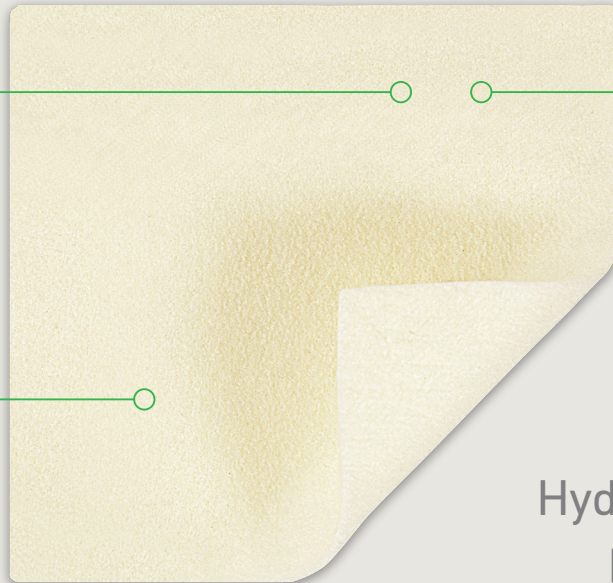
Gelling fibre dressing with Hydrolock® Technology

Maximum absorbency

- Gelling fibres gel on contact with exudate, locking in fluid

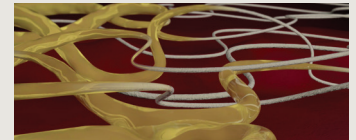
Superior Retention Capacity

- Minimizes leakage and maceration
- Absorbs and retains exudate, bacteria and blood



Hydrolock® technology

- High tensile strength
- Dressing removal in one piece
- Saves nursing time and increases patient comfort



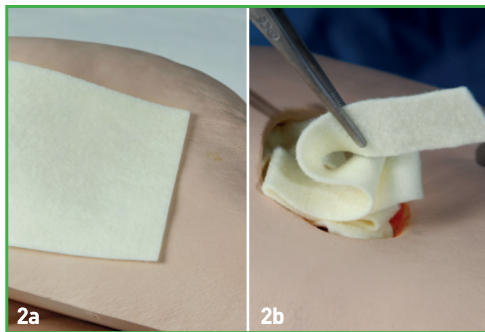
Hydrolock® technology provides maximum absorption, retention and integrity

- High retention capacity to prevent leakage and maceration
- High tensile strength to enable dressing removal in one piece
- Absorbs and retains exudate, blood and bacteria
- Highly absorbent, even under compression
- Soft and conformable - easy to apply

Directions for use



1. Cleanse the wound with saline solution or water. Dry the surrounding skin thoroughly.



2a. Apply a dry Exufiber® dressing to the wound. The dressing should be able to cover the entire wound. It should overlap the dry surrounding skin by at least 1-2 cm for the smaller sizes and 5 cm for larger sizes. The dressing will shrink as it absorbs wound fluid and starts gelling.

2b. Loosely pack ribbon or sheet into the wound to allow room for swelling of the dressing. Cut to appropriate length leaving a small overhang of 2-3 cm outside of the wound for easy retrieval.



3. Fixate with an appropriate secondary dressing. Compression therapy may be used in conjunction with Exufiber®. Exufiber® can be left in place for up to 7 days depending on wound condition or as indicated by clinical practice. Remove the Exufiber® dressing by gently cleansing/flushing with saline solution or water according to clinical practice. Any non-gelled material will moisten in contact with the saline.

How Exufiber® works

Exufiber® is a nonwoven dressing with proprietary gelling fibre technology. In contact with wound exudate, Exufiber® transforms into a gel that facilitates moist wound healing and ease of removal during dressing change. Exufiber® absorbs and retains wound exudate. Exufiber® is available both as sheet and ribbon dressings.

Benefits of Exufiber®

- High tensile strength to enable dressing removal in one piece
- High retention capacity to prevent leakage and maceration
- Absorbs and retains exudate, blood and bacteria
- Highly absorbent - may be used under compression
- Soft and conformable which makes it easy to apply
- Can be left in place during radiation therapy, X-ray and MRI (Magnetic Resonance Imaging)

Precautions*

- Exufiber® is for single-use only and should not be re-used. Re-use may lead to product deterioration or cross contamination may occur.
- Sterility is guaranteed unless pouch is opened or damaged prior to use. Do not re-sterilize.
- All wounds should be inspected frequently. In case of signs of clinical infection, consult a health care professional for adequate infection treatment.
- Exufiber® is not intended for dry wounds, full thickness injuries or surgical implantations.
- If the dressing dries out and is difficult to remove; it should be moistened according to local policies (e.g. with sterile saline or sterile water) and allowed to soak until it lifts easily. It may take several minutes for Exufiber® to transform into a gel. Remove the dressing by gently cleansing/flushing.

Indications*

Exufiber® wound dressing is intended to be used on a wide range of exuding wounds:

- Leg and foot ulcers
- Pressure ulcers
- Partial thickness burns
- Surgical wounds
- Donor sites
- Malignant wounds



Exufiber® Assortment (Sterile packed)

Art. no	Size cm	Pcs/Box	Pcs/Case
709900	5 x 5	10	40
709901	10 x 10	10	60
709903	15 x 15	10	60
709904	20 x 30	5	25
709909	2 x 45	5	20

*Notice: For Mölnlycke licensed product details including indication and precaution, please refer to www.molnlycke.ca