

# Exufiber®

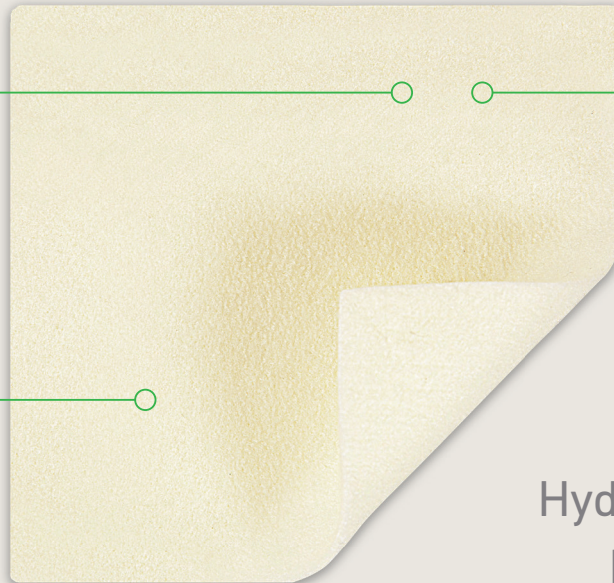
## Gelling fibre dressing with Hydrolock® Technology

### Maximum absorbency

- Gelling fibres gel on contact with exudate, locking in fluid

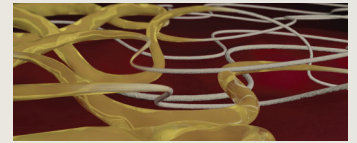
### Superior Retention Capacity

- Minimizes leakage and maceration
- Absorbs and retains exudate, bacteria and blood



### Hydrolock® technology

- High tensile strength
- Dressing removal in one piece
- Saves nursing time and increases patient comfort

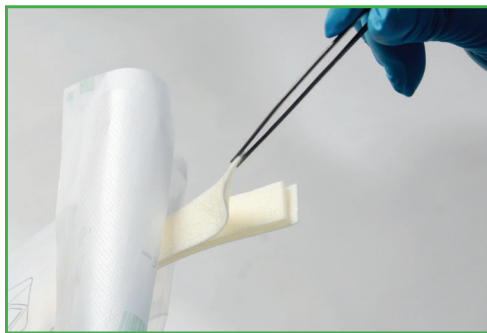


Hydrolock® technology provides maximum absorption, retention and integrity

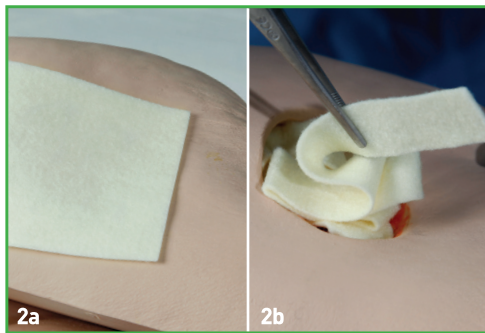
- High retention capacity to prevent leakage and maceration
- High tensile strength to enable dressing removal in one piece
- Absorbs and retains exudate, blood and bacteria

- Highly absorbent, even under compression
- Soft and conformable - easy to apply

## Directions for use



**1.** Cleanse the wound with saline solution or water. Dry the surrounding skin thoroughly.



**2a.** Apply a dry Exufiber® dressing to the wound. The dressing should be able to cover the entire wound. It should overlap the dry surrounding skin by at least 1-2 cm for the smaller sizes and 5 cm for larger sizes. The dressing will shrink as it absorbs wound fluid and starts gelling.

**2b.** Loosely pack ribbon or sheet into the wound to allow room for swelling of the dressing. Cut to appropriate length leaving a small overhang of 2-3 cm outside of the wound for easy retrieval.



**3.** Fixate with an appropriate secondary dressing. Compression therapy may be used in conjunction with Exufiber®. Exufiber® can be left in place for up to 7 days depending on wound condition or as indicated by clinical practice. Remove the Exufiber® dressing by gently cleansing/flushing with saline solution or water according to clinical practice. Any non-gelled material will moisten in contact with the saline.

## How Exufiber® works

Exufiber® is a nonwoven dressing with proprietary gelling fibre technology. In contact with wound exudate, Exufiber® transforms into a gel that facilitates moist wound healing and ease of removal during dressing change. Exufiber® absorbs and retains wound exudate. Exufiber® is available both as sheet and ribbon dressings.

## Benefits of Exufiber®

- High tensile strength to enable dressing removal in one piece
- High retention capacity to prevent leakage and maceration
- Absorbs and retains exudate, blood and bacteria
- Highly absorbent - may be used under compression
- Soft and conformable which makes it easy to apply
- Can be left in place during radiation therapy, X-ray and MRI (Magnetic Resonance Imaging)

## Precautions\*

- Exufiber® is for single-use only and should not be re-used. Re-use may lead to product deterioration or cross contamination may occur.
- Sterility is guaranteed unless pouch is opened or damaged prior to use. Do not re-sterilize.
- All wounds should be inspected frequently. In case of signs of clinical infection, consult a health care professional for adequate infection treatment.
- Exufiber® is not intended for dry wounds, full thickness injuries or surgical implantations.
- If the dressing dries out and is difficult to remove; it should be moistened according to local policies (e.g. with sterile saline or sterile water) and allowed to soak until it lifts easily. It may take several minutes for Exufiber® to transform into a gel. Remove the dressing by gently cleansing/flushing.

## Indications\*

Exufiber® wound dressing is intended to be used on a wide range of exuding wounds:

- Leg and foot ulcers
- Pressure ulcers
- Partial thickness burns
- Surgical wounds
- Donor sites
- Malignant wounds



## Exufiber® Assortment (Sterile packed)

Art. no	Size cm	Pcs/Case
709900	5 x 5	40
709901	10 x 10	80
709903	15 x 15	60
709904	20 x 30	25
709909	2 x 45	25

\*Notice: For Mölnlycke licensed product details including indication and precaution, please refer to [www.molnlycke.ca](http://www.molnlycke.ca)